

SALVESEN GRAHAM

THE COLLECTION

SALVESEN GRAHAM OTTOMAN

SGDSOT

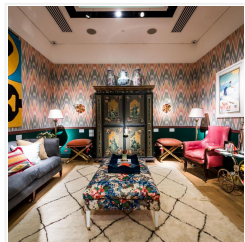
From \$2,135.00

Taking inspiration from the simplicity of Georgian design, our Salvesen Graham Ottoman features elegant proportions with a sensitivity to design history.

Mary and Nicole love to use a soft piece of furniture in the middle of the room as a place to perch. By adding our Cane Large Trays you can create a space for placing drinks and displaying flowers, making our Ottoman endlessly versatile.

Made by craftspeople in England, each Ottoman is made to order in a choice of Salvesen Graham fabrics or customers own material, skirts lengths or an elegant piped edge, and a curation of leg paint colours and timeless wood finishes to coordinate with our Salvesen Graham fabrics.

We use a solid beech frame for strength and durability and a feather filled seat cushion for optimum comfort. Tapered legs create a beautiful shape to the ottoman ensuring versatility allowing it to suit a variety living spaces. Our Salvesen Graham Ottoman is designed to be classical and timeless so that it can be enjoyed for many years to come.



Salvesen Graham
Unit 1, One Riverside,
One Eastfields Avenue,
London SW18 1FQ

Tel: +44 207 967 7777 | Email: info@salvesengraham.com

SALVESEN GRAHAM

THE COLLECTION

Dimensions: L80cm x W120cm x H46cm

Lead Time:

Up to 14 weeks if not in stock

Material:

Solid Beech Wooden Frame,
Upholstery Fabric Of Choice, Feather
Filled Seat Cushion, Solid Wooden
Legs With Finish Of Choice, Brass
Castors

Production: Handmade

Salvesen Graham
Unit 1, One Riverside,
One Eastfields Avenue,
London SW18 1FQ

Tel: +44 207 967 7777 | Email: info@salvesengraham.com